

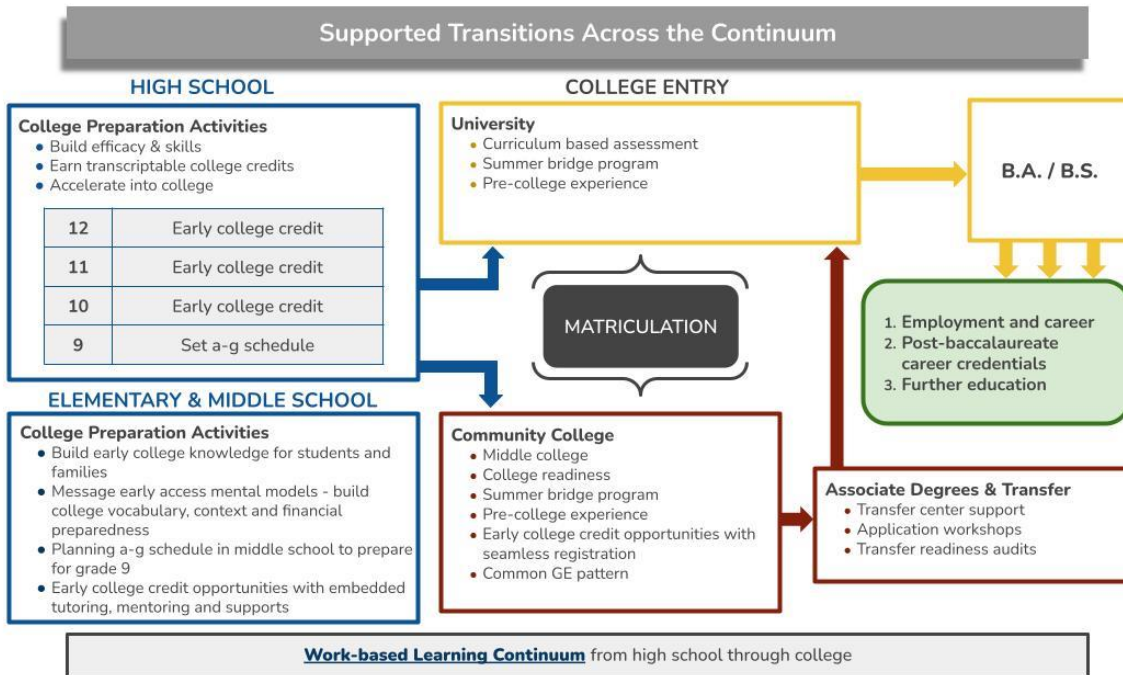
# BAY AREA K-16 EDUCATION COLLABORATIVE

## Vision

The **Bay Area K-16 Education Collaborative** (The Bay Area Collaborative) is committed to an equity-centered regional partner network to collectively impact achievement across the educational continuum leading to high-demand, high-skill careers. The network will accelerate pathway development and expansion in three industries key to the Bay Area economy: *Business Management, Education, and Engineering* with attention to multidisciplinary STEM components in each sector.

Together we will focus on student retention and seamless transitions between educational institutions; inclusive front doors and effective onramps to college, including early college preparation for youth; institutional change efforts to reduce barriers to equitable degree completion and career entry; inclusive student supports coordinated across the network of partners including unified school districts, community colleges, universities, and employers; and deeper connections with industry, including the expansion of work-based learning for students.

While the partners (see Partners List) will initially address smoother transitions from high school to college and into employment, the Collaborative has the long view in mind. Ultimately, we seek to craft a seamless system of support at every step along the educational journey, starting as early as elementary school and reaching to advanced degrees, careers, and post-baccalaureate credentials.



## Background

The Chabot-Las Positas Community College District (CLPCCD) is convening an extensive regional network of educational institutions, employers, and other stakeholders to establish the **Bay Area K-16 Education Collaborative** (The Bay Area Collaborative). This network will

## BAY AREA K-16 EDUCATION COLLABORATIVE

strengthen linkages in the region among unified school districts, community colleges universities, and employers to streamline educational pathways and address inequities in education and employment in three sectors key to the Bay Area economy.

The Bay Area Collaborative, led by the Core Partners (see Partners List), seeks to leverage a new funding opportunity through the [California Regional K-16 Education Collaborative Grant Program](#), preparing a Phase 2 planning grant (\$100,000-\$250,000 for one year) due in early October 2022 with plans to submit a full implementation proposal in fall 2023.

The Bay Area Collaborative builds upon a strong body of collaborative work through the Core Partners, especially in the East Bay, including two major systemic change efforts:

- 1) *Hayward Promise Neighborhoods* (HPN), a 10-year East Bay initiative advancing education reform and neighborhood renewal. Led by California State University, East Bay (CSUEB), HPN is a partnership of educators, government agencies, business, and nonprofits working together to ensure educational success and economic well-being in the East Bay.
- 2) *East Bay College Agile Network* (East Bay CAN), a three-year collaboration between CLPCCD and CSUEB to increase student-centered equity pathways. The project represents a major cultural shift across Chabot College, Las Positas College, and CSUEB, moving from a single institutional approach to a collaborative model that crosses institutional boundaries to support transfer and degree completion.

The Collaborative brings substantial regional partnerships to the table (this list is not all inclusive), such as the Tri-Valley Educational Collaborative, the Mid-Alameda County Consortium, federal TRIO programs connecting K-12 and higher education systems, HSI STEM grants, and sector-based projects in education and engineering involving East Bay high schools, community colleges (Chabot, Las Positas, Contra Costa, Diablo Valley, and Los Medanos Colleges), and four-year institutions in the region (CSUEB, UC Berkeley, UC Merced, San Francisco and San Jose State Universities).

While current partnerships leverage well-established structures, they exist as a patchwork of relationships, programs, and services. The Bay Area Collaborative will close gaps and solidify connections between programs and institutions. Together we will define a regionally coherent strategy with cohesive pathway designs and inclusive safety nets for students to support degree completion and entry into high-demand, high-skill jobs.

### Design

The goal is to coalesce regional networks around equity pathways under one collaborative umbrella. The planning phase will allow partners to deepen their knowledge of pipeline needs and equity gaps affecting the region in dialogue with educators and employers. This groundwork will inform an implementation design to build out equitable pathways in the selected disciplines across the network. Additionally, the Collaborative will engage a wider community of allies in the robust exchange of curriculum design, student success interventions, equity strategies, and pathway mapping in the three sectors—with the intent of growing equitable pathway strategies across the broader Bay Area.

# BAY AREA K-16 EDUCATION COLLABORATIVE

The initiative will implement at least four of the following seven recommendations from the [February 2021 Recovery with Equity \(RWE\) report](#) to promote equitable student success.

- Improve faculty, staff, and administrator diversity.
- Cultivate inclusive, engaging, and equity-oriented learning environments.
- Retain students through inclusive supports.
- Provide high-tech, high touch advising.
- Support college preparation and early credit.
- Subsidize Internet access for eligible students.
- Improve college affordability.

## Bay Area Collaborative Partners List

Lead Applicant	Chabot-Las Positas Community College District (CLPCCD)
Core Partners	California State University, East Bay (CSUEB) Chabot-Las Positas Community College District (CLPCCD) Contra Costa Community College District (4CD) Hayward Unified School District (HUSD) Tri-Valley Educational Collaborative (TEC) University of California, Berkeley (UCB) (Open to additions)
Employers and Industry Associations	In progress
Community of Practice Partners	(To be confirmed and expanded) San Francisco State University (SFSU) San Jose State University (SJSU) San Lorenzo Unified School District University of California, Merced (UC Merced) Additional partners TBD
Backbone/Convening Organization(s)	TBD
Other Stakeholders	Mid-Alameda County Consortium (MACC) – to be confirmed Additional partners TBD

## Potential Outcomes & Areas of Focus

- Diversification of the education pipeline, addressing disconnected youth and adults.
- Gaps analysis at the local level resulting in tailored interventions for students of color most affected by structural barriers to higher education, particularly in STEM.
- Seamless transitions at every point along the educational journey to eliminate disparities among student groups, starting with early college awareness in elementary school.
- Concentrated effort to inspire students along the entire pathway, creating a sense of belonging and connection with students' campus of choice.
- Expanded work-based learning and informal learning opportunities that span the continuum.
- Advanced admissions to university, supporting students to be competitive in a curriculum-based assessment process to university acceptance.
- Expanded on-ramps to college including bridge programs, dual enrollment, early college credit, and early access college preparation for students and families.
- Institutional approaches supporting utilization of Associate Degree for Transfer pathways,

## BAY AREA K-16 EDUCATION COLLABORATIVE

- capitalizing on [AB 928 momentum](#).
- Shared data and technology such as batch enrollment for dual enrollment and data agreements to prevent “summer melt” from high school to college and from community college to university.

### Timeline

The RFP for Phase 2 planning grants will be released September 1, 2022, with a due date of October 3, 2022. Phase 2 implementation grants will be available September 1, 2023.